

W1/4
N 8

N0002'09"E
1488.66' (M)

SE1/4NW1/4
SECTION 8

SW1/4NE1/4
SECTION 8

N8818'08"E
1946.40' (M)

FUTURE
DEVELOPMENT
NOT A PART

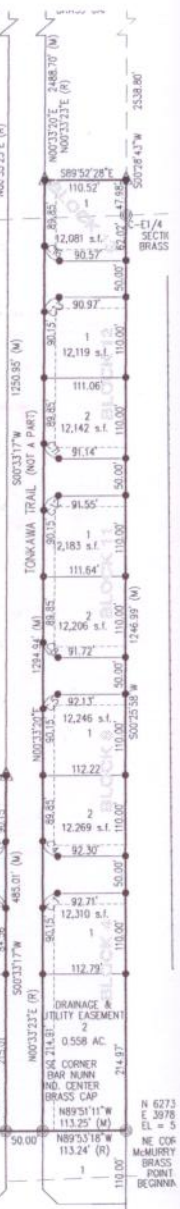
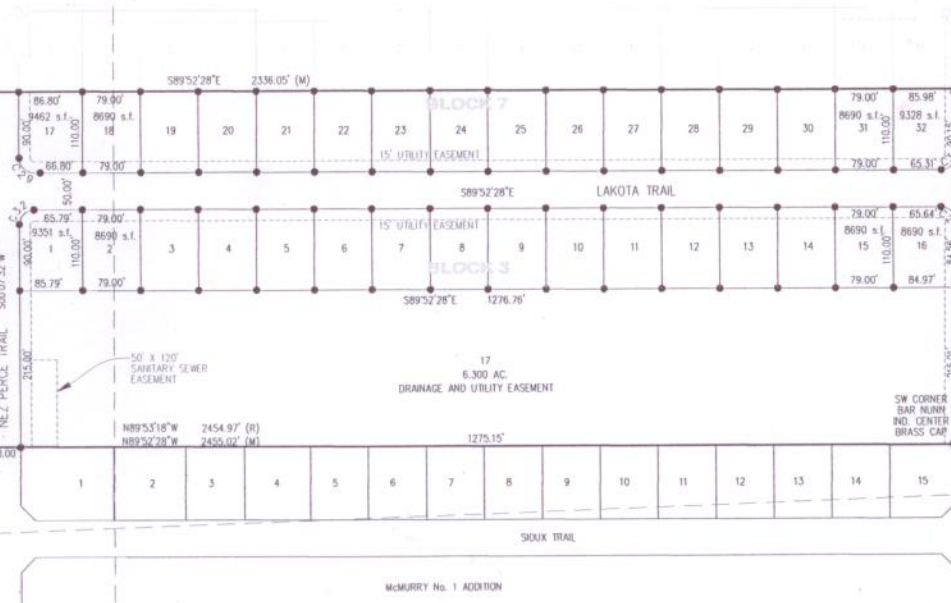
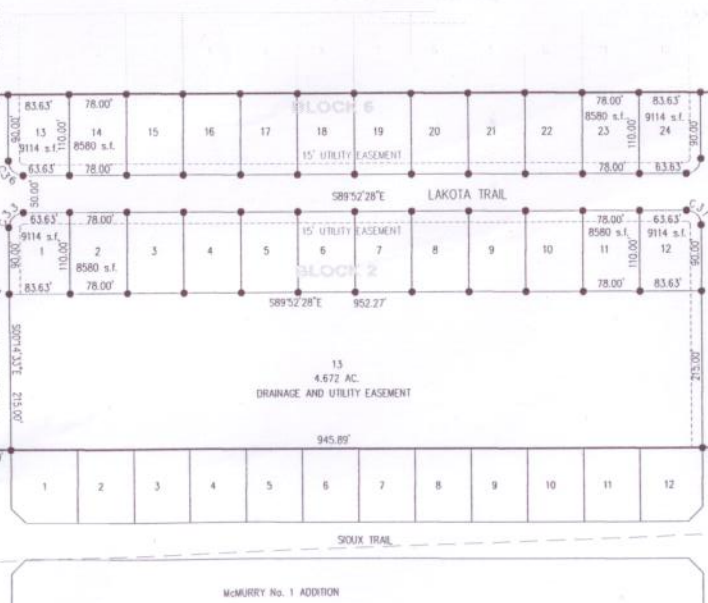
FUTURE
DEVELOPMENT
NOT A PART

Vista Hills No 1

SECTION

N0002'09"E
461.00' (M)
N0002'09"E
123.32'
103.11'
13,428 s.f.
1
103.19'
103.00'
50.00'
103.00'
172.60'
DRAINAGE &
UTILITY EASEMENT
2
0.601 AC
215.00'
N 627386.71
E 395222.17
EL = 5547.67
NW CORNER
MCMURRY No. 1
BRASS CAP
POINT OF
BEGINNING #1

63.00'
121.13'



N 6273
E 3978
EL = 5
NE COR
MCMURRY
BRASS
POINT
BEGINNING

MCMURRY No. 1 ADDITION

MCMURRY No. 1 ADDITION